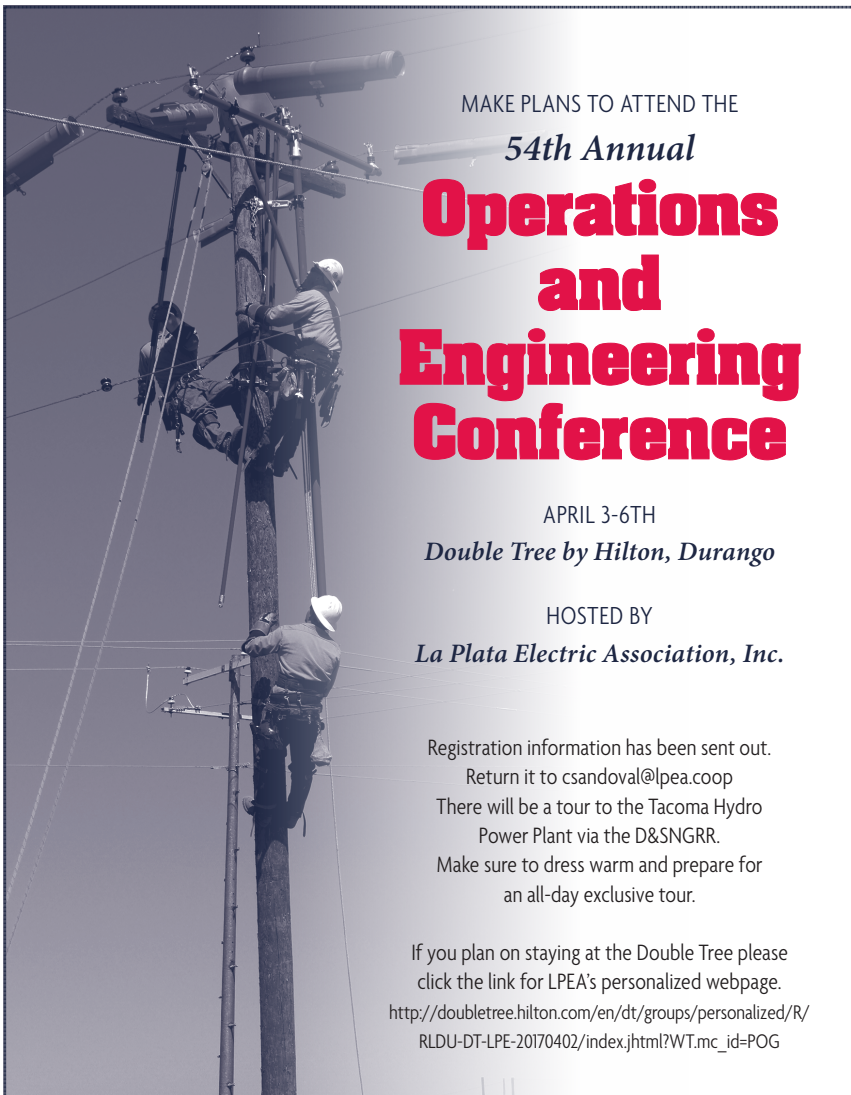


The Current flow

FEBRUARY 2017



A SAFETY NEWS AND SAFETY INFORMATION PUBLICATION OF THE CREA LOSS CONTROL DEPARTMENT



MAKE PLANS TO ATTEND THE
54th Annual
**Operations
and
Engineering
Conference**

APRIL 3-6TH
Double Tree by Hilton, Durango

HOSTED BY
La Plata Electric Association, Inc.

Registration information has been sent out.
Return it to csandoval@lpea.coop
There will be a tour to the Tacoma Hydro
Power Plant via the D&SNGRR.
Make sure to dress warm and prepare for
an all-day exclusive tour.

If you plan on staying at the Double Tree please
click the link for LPEA's personalized webpage.
http://doubletree.hilton.com/en/dt/groups/personalized/R/RLDU-DT-LPE-20170402/index.jhtml?WT.mc_id=POG

RESAP Training in Granby

Bud Branham of NRECA will be teaching the RESAP Qualified Observer Training March 14-15 in Colorado. The course will be presented at Mountain Parks Electric in Granby from 8 a.m. to 4:30 p.m. Tuesday and from 8 a.m. to noon Wednesday.

Co-ops have received registration packets from CREA Safety and Loss Control. Those with questions should contact Angelea Meyer at ameyer@coloradorea.org.



A minute with
Kent
Singer

THE CREA SAFETY AND LOSS CONTROL TEAM HAS HIT THE GROUND RUNNING IN 2017, continuing its work around the state to provide safety and regulatory compliance training to our co-op staff.

So far this year, Dan Whitesides has conducted safety training, and performed crew observations at Empire, LPEA, Sangre de Cristo, as well as presenting the department report to the CREA board. Curt Graham has conducted training and done crew visits at United Power, Yampa Valley. Y-W and White River. Angelea Meyer has



Kent Singer

conducted hazardous communication training at DMEA, attended Hotline School meetings in Grand Junction and presented at Yampa Valley. This week she is at CLCP training.

So far, they have successfully navigated around or through the piles of snow in the high country to provide service to our members.

On the personnel front, we continue our search for a new director of the safety and loss control department. The deadline for submitting applications for the position was January 16, and the NRECA search team received 24 applications for the job.

We have narrowed that field considerably and will soon select a group of finalists that will be interviewed for the position. We have an excellent pool of candidates and I'm confident we will find the right person for the job. We're looking forward to new leadership for the department as we strive to provide the best possible safety and loss control programs.

We plan to provide the "Speak Up/Listen Up" training to all co-ops in 2017 (Dan conducted the program at Sangre de Cristo in January). Look forward to a member of our team coming to your shop sometime this year to facilitate this important new communication tool.

2017 EDUCATION COURSES FOR OUTSIDE EMPLOYEES

For more information on these classes or to register, visit crea.coop and click on Calendar.

| COURSE | DATE | LOCATION | INSTRUCTOR |
|--|----------------------|---------------------|---------------------|
| Reclosers | February 6-7, 2017 | YVEA/Steamboat | Mike Dean |
| <i>Webinar: Clearances-Roads, Rail, Water</i> | February 7, 2017 | Webinar | Hi-Line Engineering |
| Reclosers | February 21-22, 2017 | LPEA/Durango | Mike Dean |
| Line Design & Staking #2 & Optional 2-Day NESC training | February 27-March 2 | CREA/Denver | Hi-Line Engineering |
| <i>Webinar: Clearances-Buildings</i> | March 7, 2017 | Webinar | Hi-Line Engineering |
| Line Design & Staking #3 | March 13-16, 2017 | CREA/Denver | Hi-Line Engineering |
| Supervisory Solutions | April 5-6, 2017 | CREA/Denver | Peak Solutions |
| <i>Webinar: Clearance for Joint Use Facilities</i> | April 11, 2017 | Webinar | Hi-Line Engineering |
| <i>Webinar: Clearances to Grain Bins & Pools</i> | May 9, 2017 | Webinar | Hi-Line Engineering |
| Mechanics Conference | May 23-24, 2017 | Holy Cross/Glenwood | Multiple |
| <i>Webinar: Motor Starting Analysis</i> | June 6, 2017 | Webinar | Hi-Line Engineering |
| <i>Webinar: Solar Design</i> | July 11, 2017 | Webinar | Hi-Line Engineering |
| <i>Webinar: DG Interconnection</i> | August 8, 2017 | Webinar | Hi-Line Engineering |
| Supervisory Solutions | September 6-7, 2017 | Holy Cross/Glenwood | Peak Solutions |
| <i>Webinar: Techniques for Reducing System Loss</i> | September 12, 2017 | Webinar | Hi-Line Engineering |
| <i>Webinar: Conductor Characteristics</i> | October 10, 2017 | Webinar | Hi-Line Engineering |
| <i>Webinar: Distribution Grounding</i> | November 14, 2017 | Webinar | Hi-Line Engineering |
| Nuts & Bolts of Work Orders | November 29-30, 2017 | La Plata/Durango | Kim Mikkelsen |
| Reclosers | December 4-5, 2017 | SIEA/Pueblo West | Mike Dean |

What OSHA's Crane Certifications Means for Co-ops

Electric co-ops will need to be in compliance with OSHA's crane certification requirement by November 7, 2017. What does that mean for local co-ops?

In reference to digger derricks, the standard excludes the electric utility industry as long as the equipment is being used within the scope of 1910.269 and Subpart V. If this equipment is to be used for tasks outside the scope of electric transmission, distribution, and generation regulation, the operator of the digger derrick shall be crane certified (1926.1400(c)(4)).

But, what if a bucket truck can be used outside the scope of Subpart V? Under the standard, bucket trucks would fall under the exclusions (1926.1400(c)(5)).

Furthermore, the standard requirement for certification excludes lifting equipment capable of lifting less than 2,000 pounds. This would conclude that the regulation allows bucket trucks with jibs limited to a less than 2,000-pound lifting capacity to be able to work outside the scope of utility work without a certified crane operator, as long as the employer has trained any affected employees on the operation prior to usage (1926.1441(e)).

Here are the regulations referenced:

Under Exclusions re: Cranes and Diggers 1926 Subpart CC... 1926.1400(c)(4)

Digger derricks when used for auguring holes for poles carrying electric or telecommunication lines, placing and removing the poles, and for handling associated materials for installation on, or removal from, the poles, or when used for any other work subject to subpart V of

this part. To be eligible for this exclusion, digger-derrick use in work subject to subpart V of this part must comply with all of the provisions of that subpart, and digger-derrick use in construction work for telecommunication service (as defined at Sec. 1910.268(s)(40)) must comply with all of the provisions of Sec. 1910.268.

1926.1400(c)(5)

Machinery originally designed as vehicle-mounted aerial devices (for lifting personnel) and self-propelled elevating work platforms.

Operator Qualification and Certification 1926 Subpart CC... 1926.1427(a)(3)

Exceptions: Operator qualification or certification under this section is not required for operators of derricks (see § 1926.1436), sideboom cranes (see § 1926.1440), or equipment with a maximum manufacturer-rated hoisting/lifting capacity of 2,000 pounds or less (see § 1926.1441).

Equipment with a rated hoisting/lifting capacity of 2,000 pounds or less under Subpart CC...

1926.1441(e)

Operator qualifications. The employer must train each operator, prior to operating the equipment, on the safe operation of the type of equipment the operator will be using.

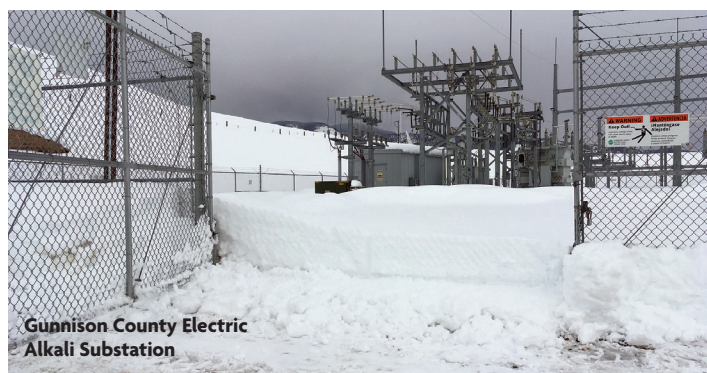
If you have any questions or would like further discussion, contact one of the members of CREA's safety and loss control department.

Winter Work

Snow, wind, ice — it all has hit since Christmas and Colorado electric co-op lineworkers have been dealing with all of it. Here are a few shots of what the crews faced at Gunnison County Electric and Sangre de Cristo Electric.



Sangre de Cristo Electric



Gunnison County Electric
Alkali Substation



Gunnison County Electric

CREA Safety & Loss Control Department *Schedule*

All schedules are subject to change.

STATEWIDE EVENTS

- Feb. 16 Operations Managers Meeting, CREA, Denver
- Mar. 14-15 RESAP Qualified Observer Training, Mountain Parks, Granby
- Apr. 3-6 O&E Conference, La Plata Electric, Durango

DAN WHITESIDES

JOB TRAINING AND SAFETY INSTRUCTOR

- Feb. 6-9 San Luis Valley REC
- Feb. 13-16 Delta-Montrose
- Feb. 20-23 Grand Valley Power
- Feb. 27- Mar. 2 Gunnison County
- Mar. 6-9 San Isabel Electric
- Mar. 14-15 RESAP Training
- Mar. 20-24 Vacation
- Mar. 27-30 San Miguel Power
- Apr. 3-6 O&E Conference, LPEA
- Apr. 10-13 Empire Electric
- Apr. 17-20 Delta-Montrose

CURT GRAHAM

JOB TRAINING AND SAFETY INSTRUCTOR

- Feb. 6 Poudre Valley
- Feb. 13 Morgan County
- Feb. 16 Operations Managers Meeting, CREA
- Feb. 20 Mountain Parks
- Feb. 27 Holy Cross
- Mar. 6 Southeast Colorado Power
- Mar. 13-16 RESAP Training
- Mar. 20 Highline
- Mar. 27 K.C. Electric
- Apr. 2-7 CLCP training in Madison, WI
- Apr. 10 United Power
- Apr. 17 CREA, Denver
- Apr. 24 Yampa Valley

ANGELEA MEYER

RISK MANAGEMENT COORDINATOR

- Feb. 5-10 CLCP training in Madison, WI
- Feb. 16 Operations Managers Meeting, CREA
- Mar. 10 Yampa Valley all-employee meeting
- Mar. 14-15 RESAP Training
- Apr. 2 O&E Conference, LPEA
- Apr. 10 San Miguel
- Apr. 24 Gunnison County
- Apr. 26 RESAP meeting, Arlington, VA

New Entry Level Driver Training Requirements

As of February 6, entry-level drivers seeking a commercial driver's license must meet an updated minimum standard of training. The compliance date to meet this new minimum standard is February 2020.

The U.S. Department of Transportation's Federal Motor Carrier Safety Administration final rule establishing these training standards for those seeking a CDL or other endorsements addresses the knowledge and skills necessary to safely operate commercial motor vehicles. The rule also establishes minimum qualifications for entities and individuals who provide entry-level driver training.

The rulemaking was mandated by Congress in the Moving Ahead for Progress in the 21st Century Act (MAP-21).

Under the final rule, applicants seeking a CDL are required to demonstrate knowledge and behind-the-wheel training on a driving range and on a public road. The training must be provided by an instructional program that meets FMCSA standards. There is no required minimum number of hours for the knowledge or behind-the-wheel portions of any of the individual training curricula, but training providers must determine that each CDL applicant demonstrates proficiency in all required elements of the training.

Mandatory, comprehensive training applies to: first-time CDL applicants for "Class A" CDLs. "Class B" CDLs, current CDL holders seeking a license upgrade (e.g., a Class B CDL holder seeking a Class A CDL), or those seeking an additional endorsement to transport hazardous materials or to operate a motorcoach or school bus.

All of these individuals are subject to the entry-level driver training requirements and must complete a class provided by an entity that meets the qualification standards set forth in the final rule. FMCSA anticipates that many entities currently providing entry-level driver training, including motor carriers, school districts, independent training schools, and individuals will be eligible to provide training that complies with the new requirements.

Drivers who are not subject to or are excepted or exempted from federal CDL requirements are not subject to this final rule. For example, military drivers, farmers, and firefighters who are excepted from federal CDL requirements are not subject to this final rule.

Watch for Slip, Trip, and Fall Hazards

According to the Occupational Safety and Health Administration, slips, trips and falls make approximately 25 percent of reported claims per year. Most of these accidents are preventable.

To help prevent slips, trips, and falls: Wear proper shoes to maintain proper traction; keep walkways and work areas clear and uncluttered; clean up spilled products as quickly as possible; make sure there is sufficient work lighting and never stand on a chair, table, or object on wheels.

Report all workplace slips, trips, and falls—even if they are minor. Be sure to report potential hazards as well. Your safety is a priority.