

# Growing Forward

## *Population and Economic Trends for Rural Colorado*

2019

Cindy DeGroen

State Demography Office

Colorado Department of Local Affairs

[Demography.dola.colorado.gov](http://Demography.dola.colorado.gov)



**COLORADO**  
Department of Local Affairs

# *State Demography Office*

- State Agency
  - Responsible for population data needed by state agencies
- Department of Local Affairs
  - Prepare data and information in ways that account for local perspectives, needs
- Public Information
  - Make data and information readily available to the public, needs
- Outreach
  - Work with local governments and others to understand what the numbers are saying



# *Transitions to Watch*

- Disparate Growth
- Slowing Growth
  - Migration - attracting and retaining the right fit.
- Aging - labor force, income, housing, jobs
- Increasing racial and ethnic diversity.
- Population growth (but slowing) - planning for the people (and everything that comes with them)



# *Big Picture - 2017-2018 Pop Change*

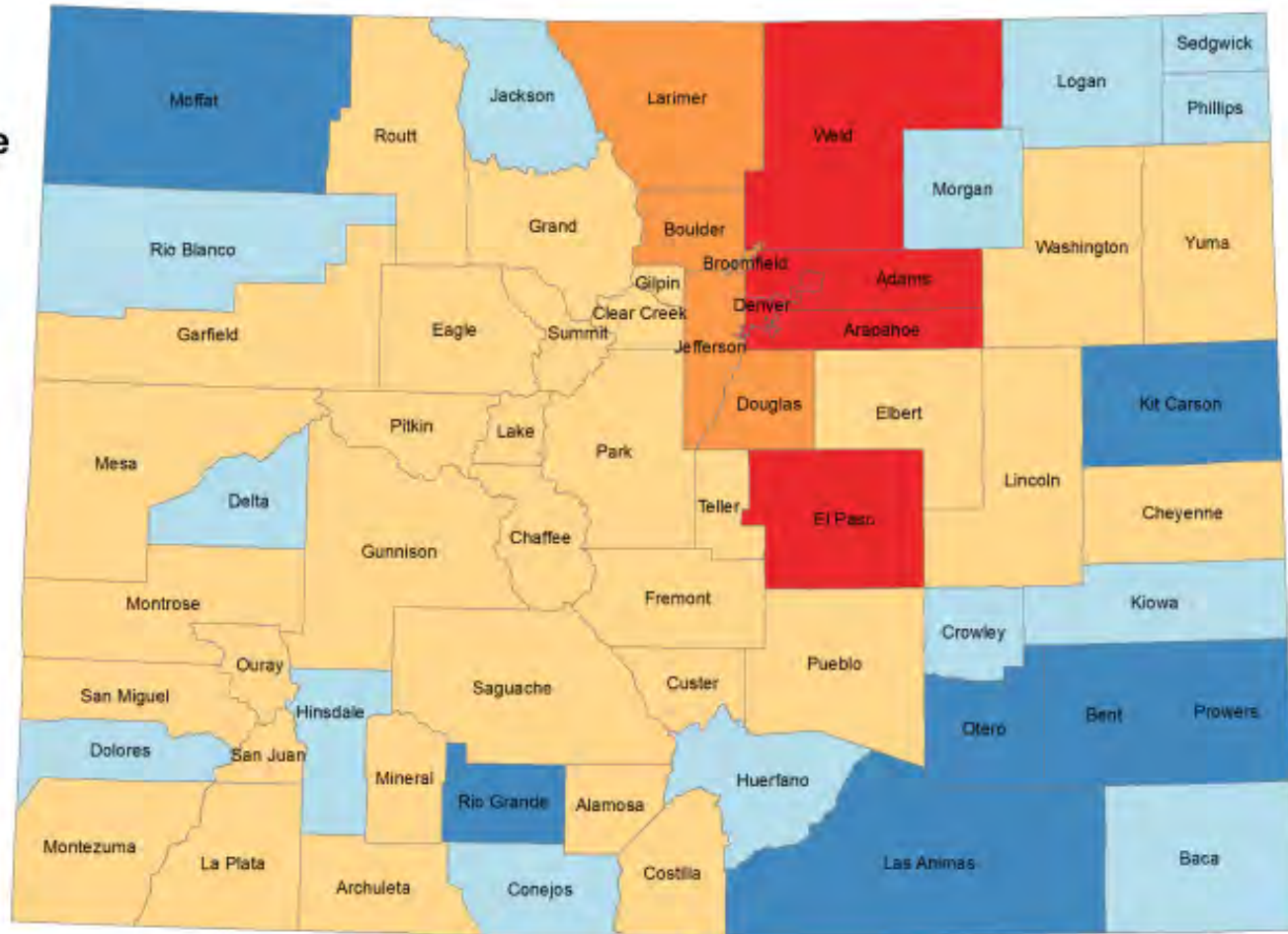
- US - 327.2 million, + 2.02 million or .6%
- Colorado - 5,695,564
- Ranked 7<sup>th</sup> fastest 1.4% - NV, ID, UT, AZ, FL, WA
- 8<sup>th</sup> in total growth **79,662** - TX, FL, CA, AZ, NC, WA, GA
- Range in Colorado
  - +12,000
  - -470



# Colorado: Total Population Change 2010 - 2017

## Population Change

- -1,173 to -500
- -499 to 0
- 1 to 10,000
- 10,001 to 50,000
- 50,000 to 101,403



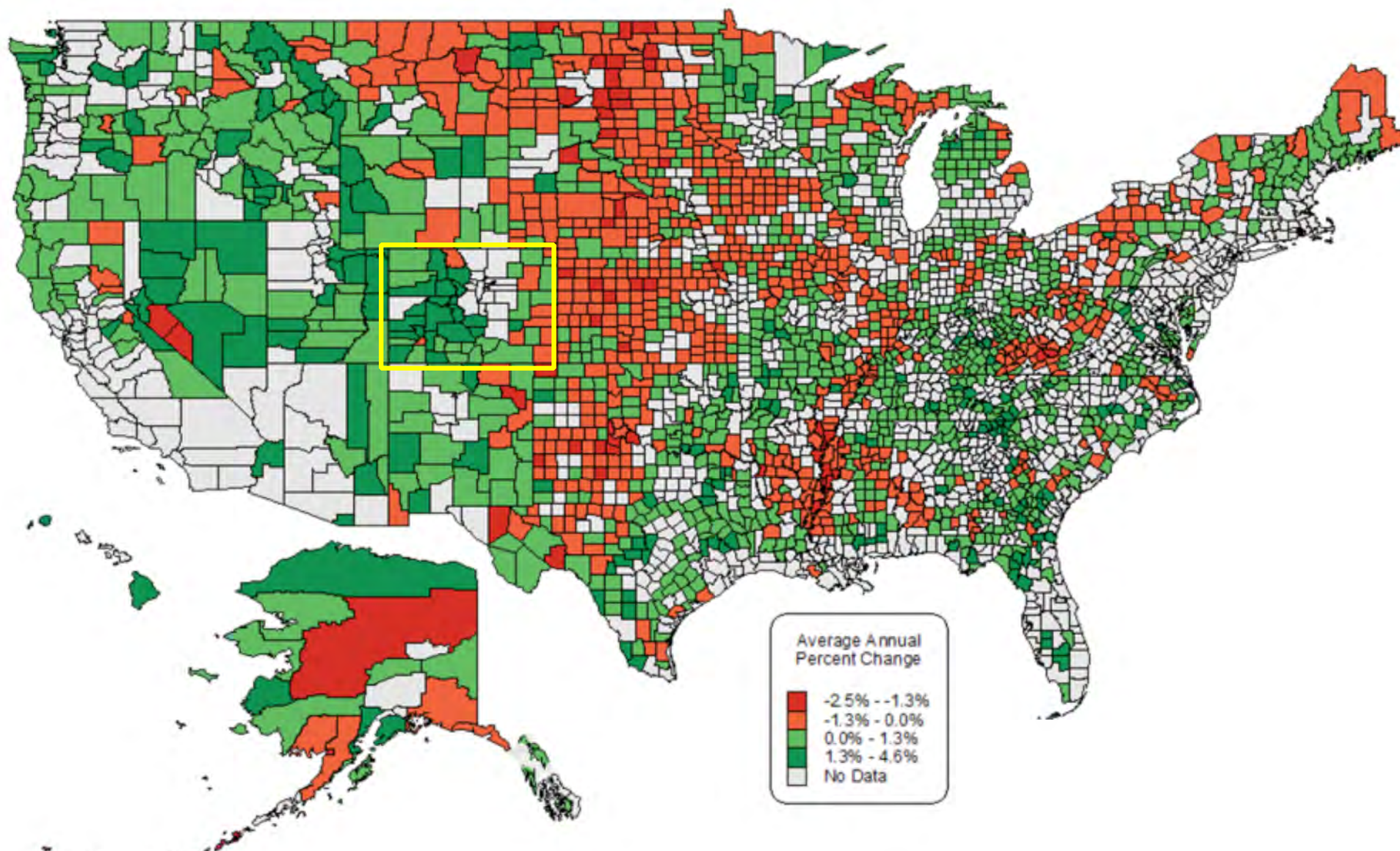
Colorado State Demography Office, 03/22/2018



**COLORADO**  
Department of Local Affairs

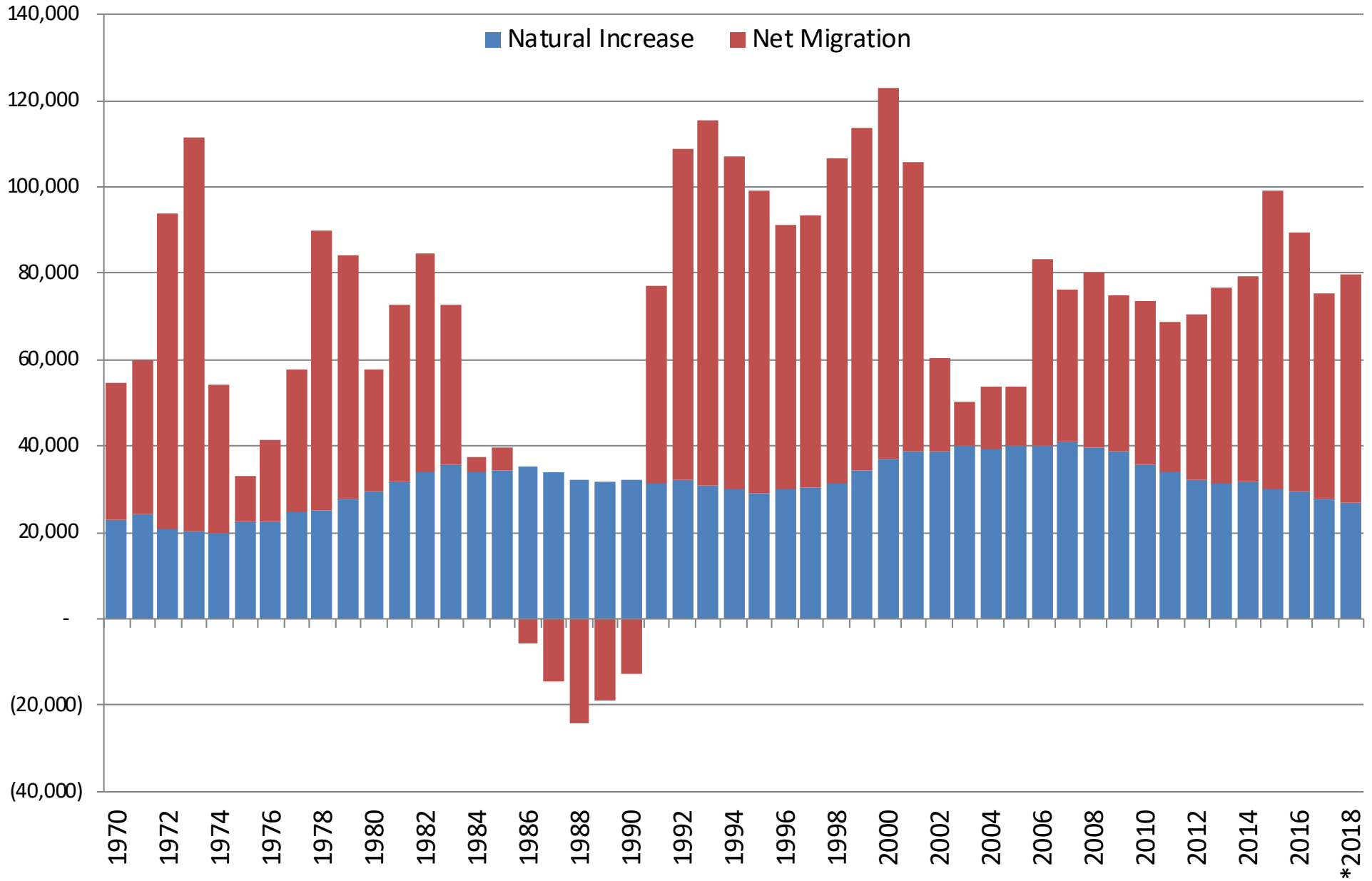
# Non-metro County Population Growth

Average Annual Growth, 1990-2014



Source: Bureau of Economic Analysis. Note: Gray shading represents metropolitan counties.

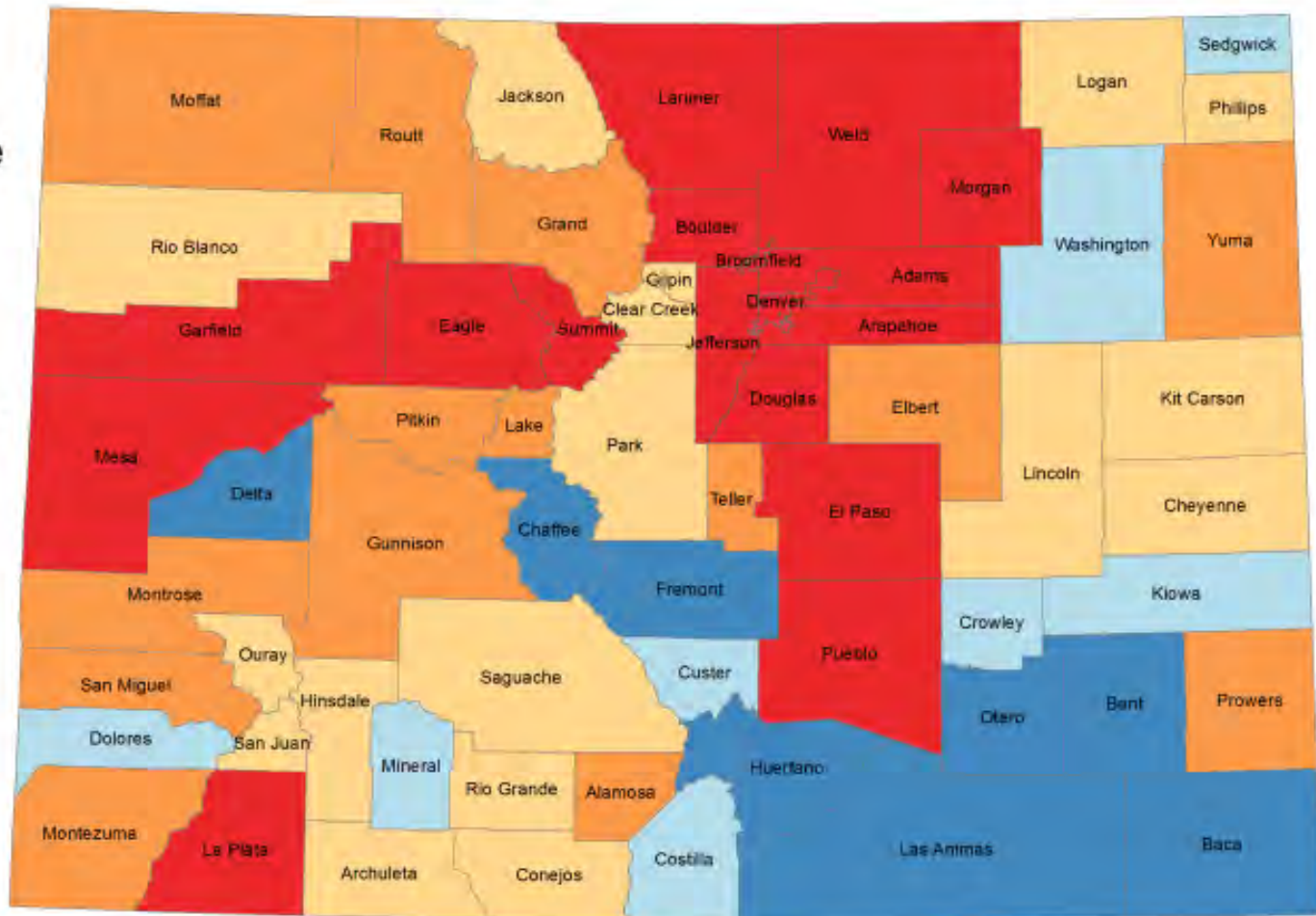
# Components of Population Change 1970-2018



# Colorado: Natural Increase

## 2010 - 2017

### Natural Increase



Colorado State Demography Office, 06/04/2018

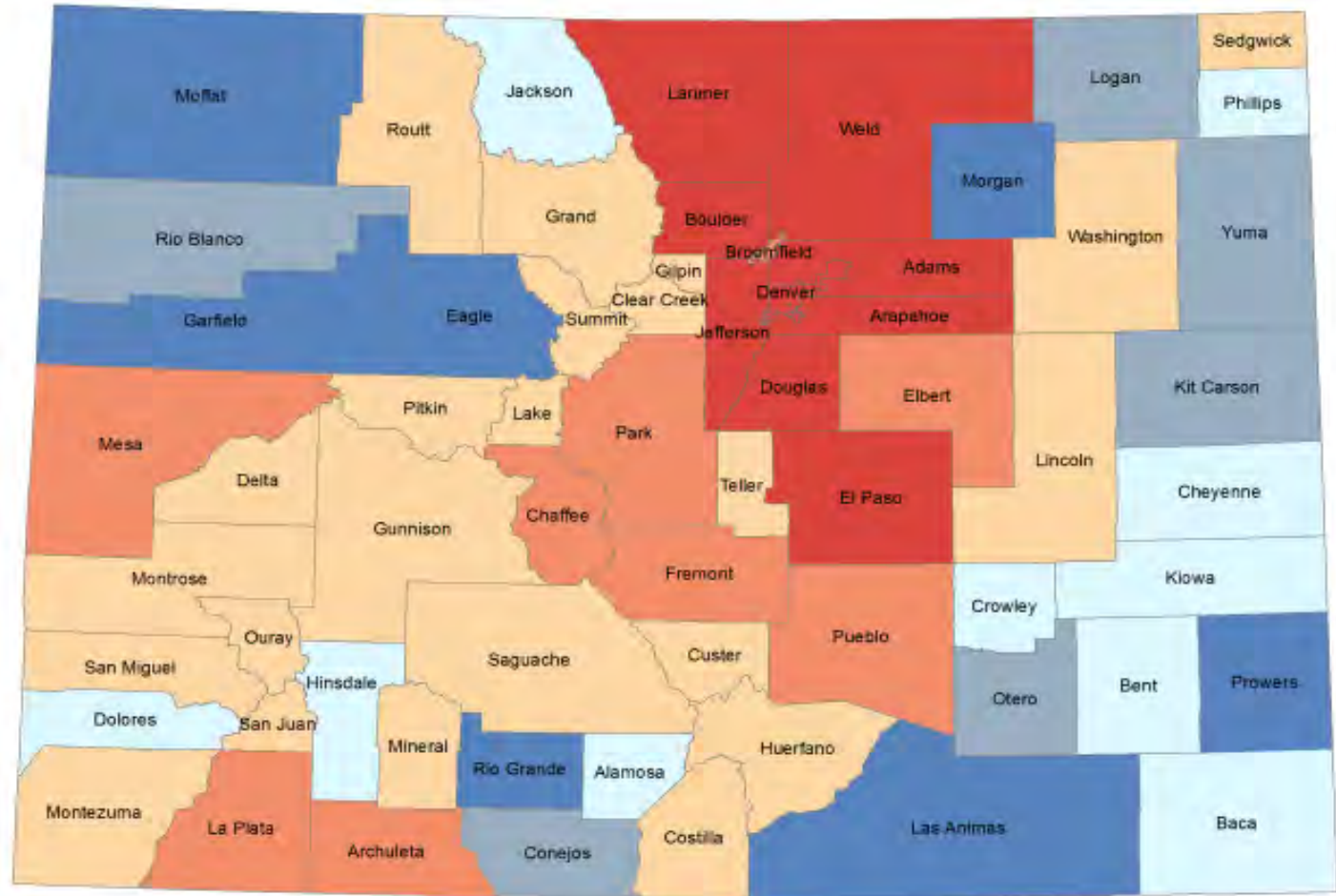
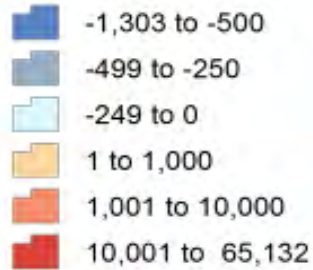


**COLORADO**  
Department of Local Affairs



# Colorado: Net Migration 2010 - 2017

## Net Migration



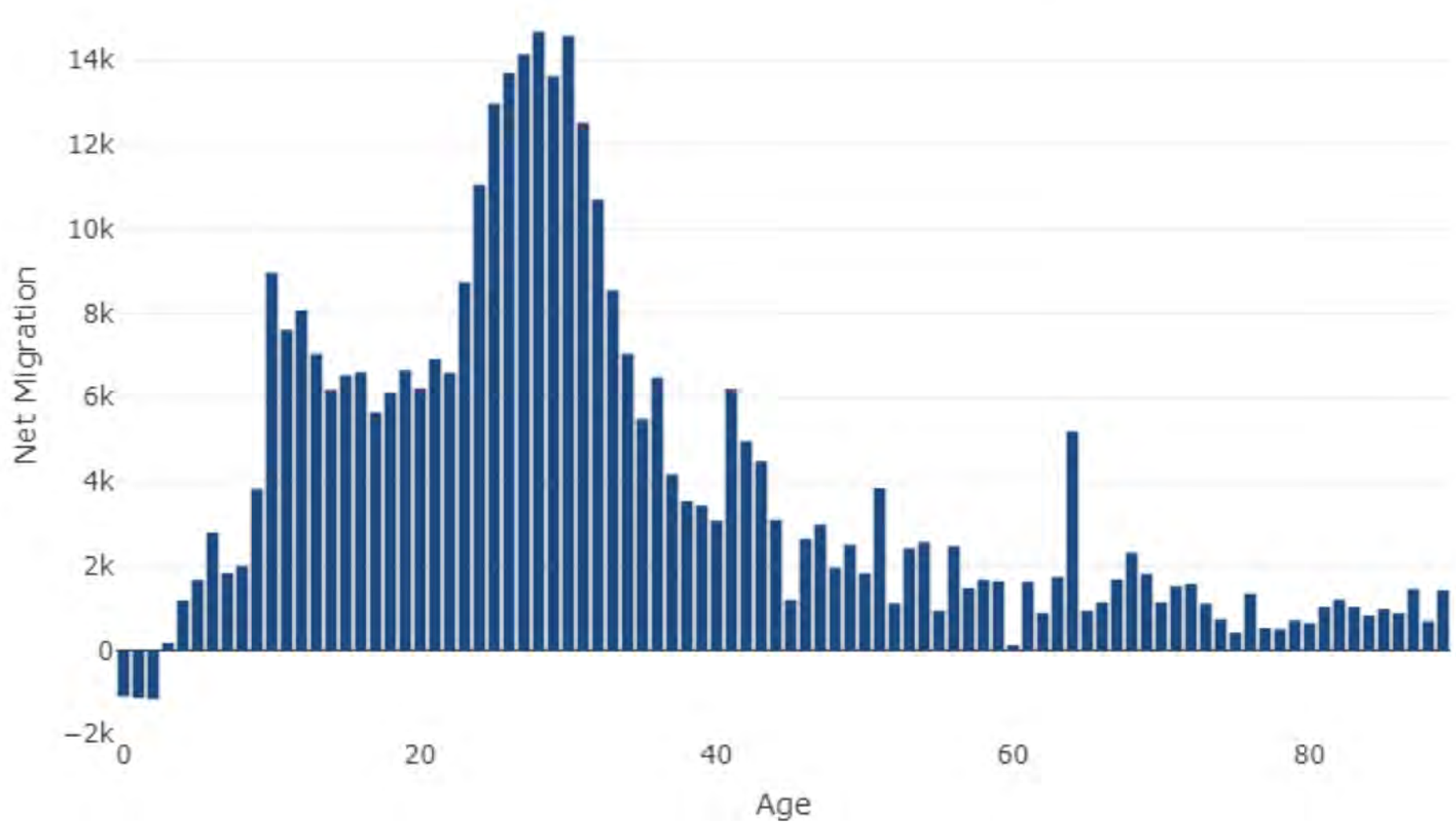
Colorado State Demography Office, 06/04/2018



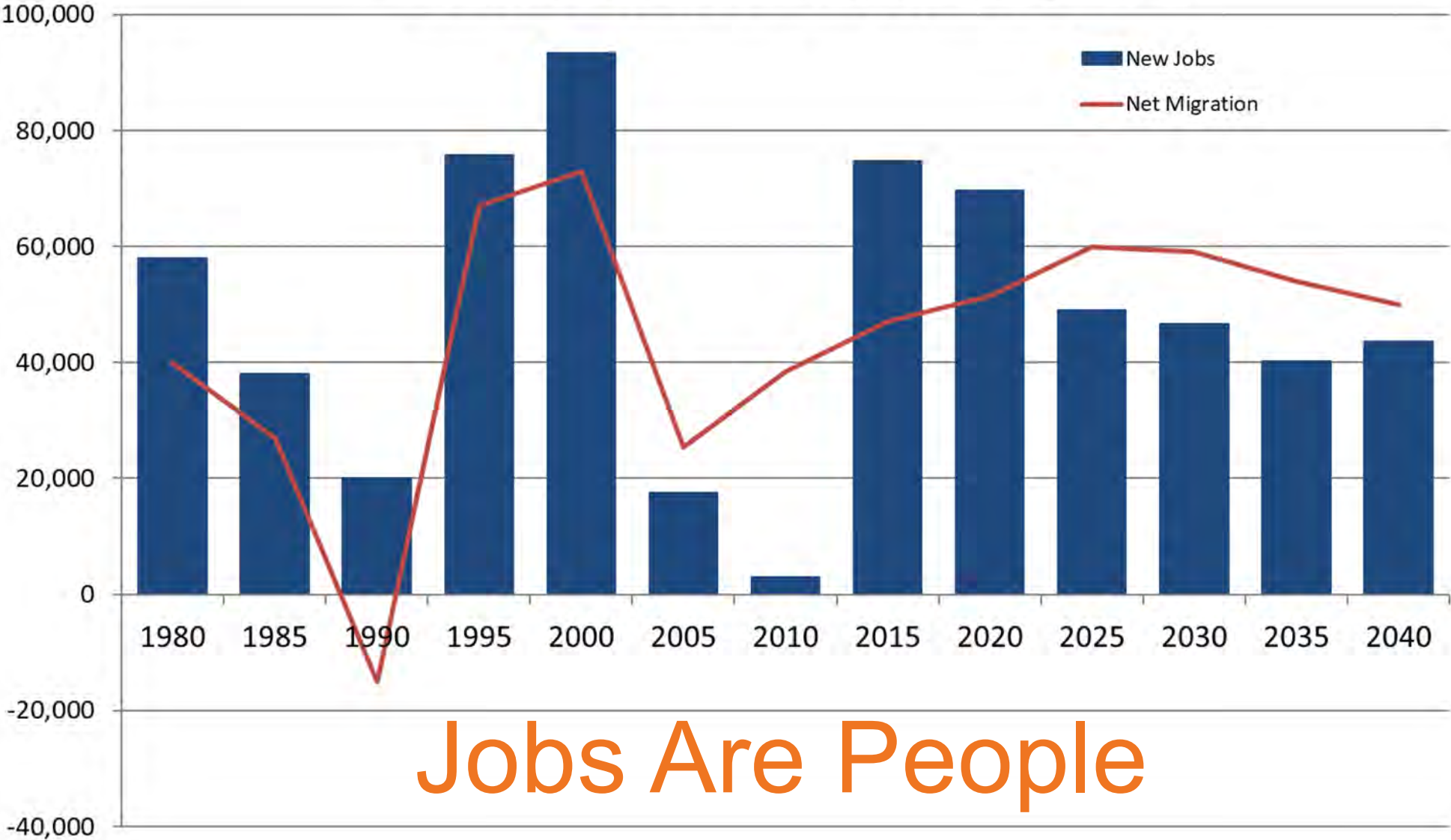
**COLORADO**  
Department of Local Affairs

# Colorado

Net Migration by Age, 2000 to 2010



# Colorado New Jobs and Net Migration



Jobs Are People

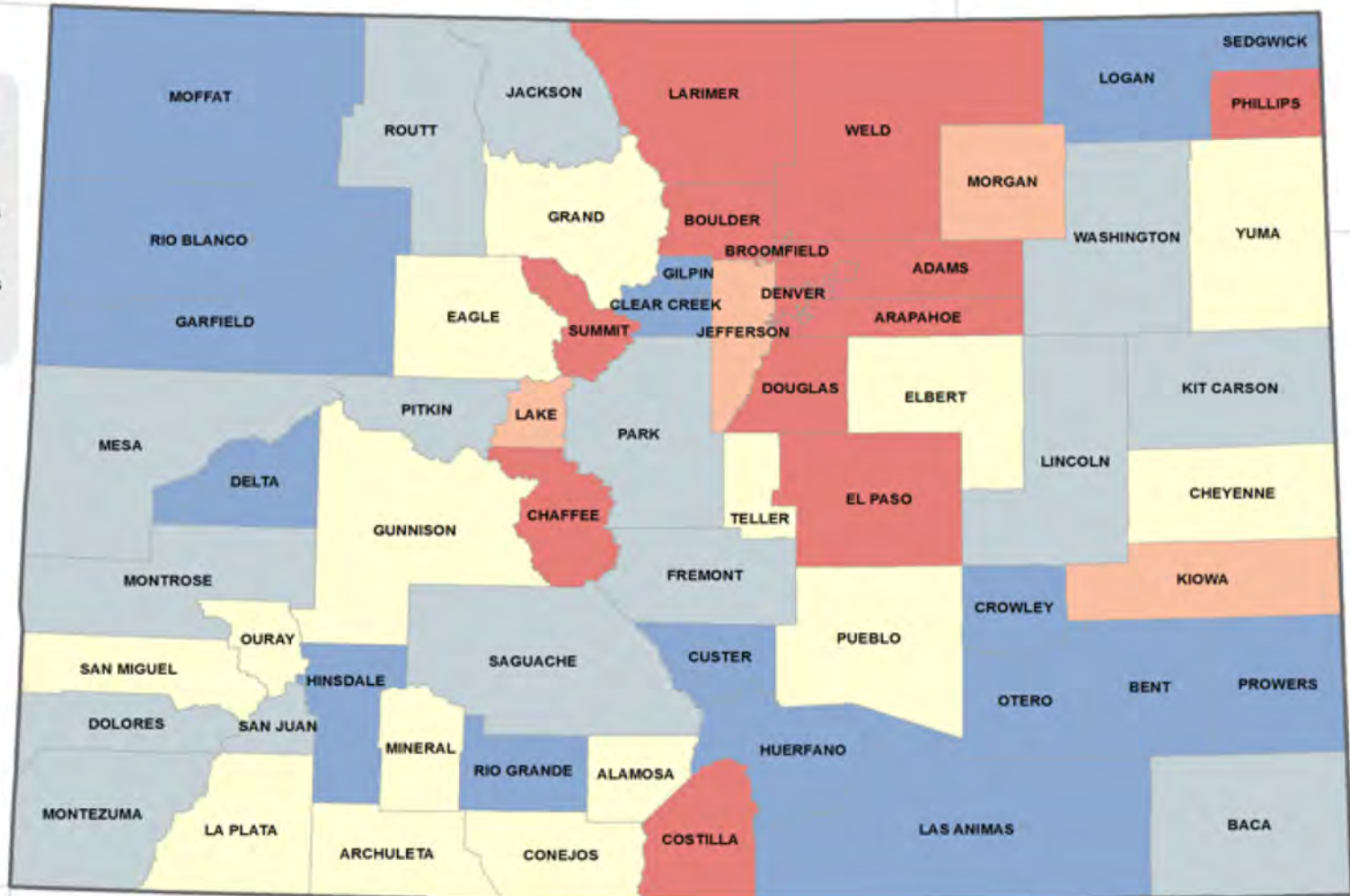


# 2017 Jobs Relative to Pre-Recession Peak

Previous Peak: 2005-2009

## 2017 Jobs vs Pre-Recession Peak

- > 5% Fewer Jobs
- 0% to 5% Fewer Jobs
- 0% to 5% More Jobs
- 5% to 10% More Jobs
- > 10% More Jobs

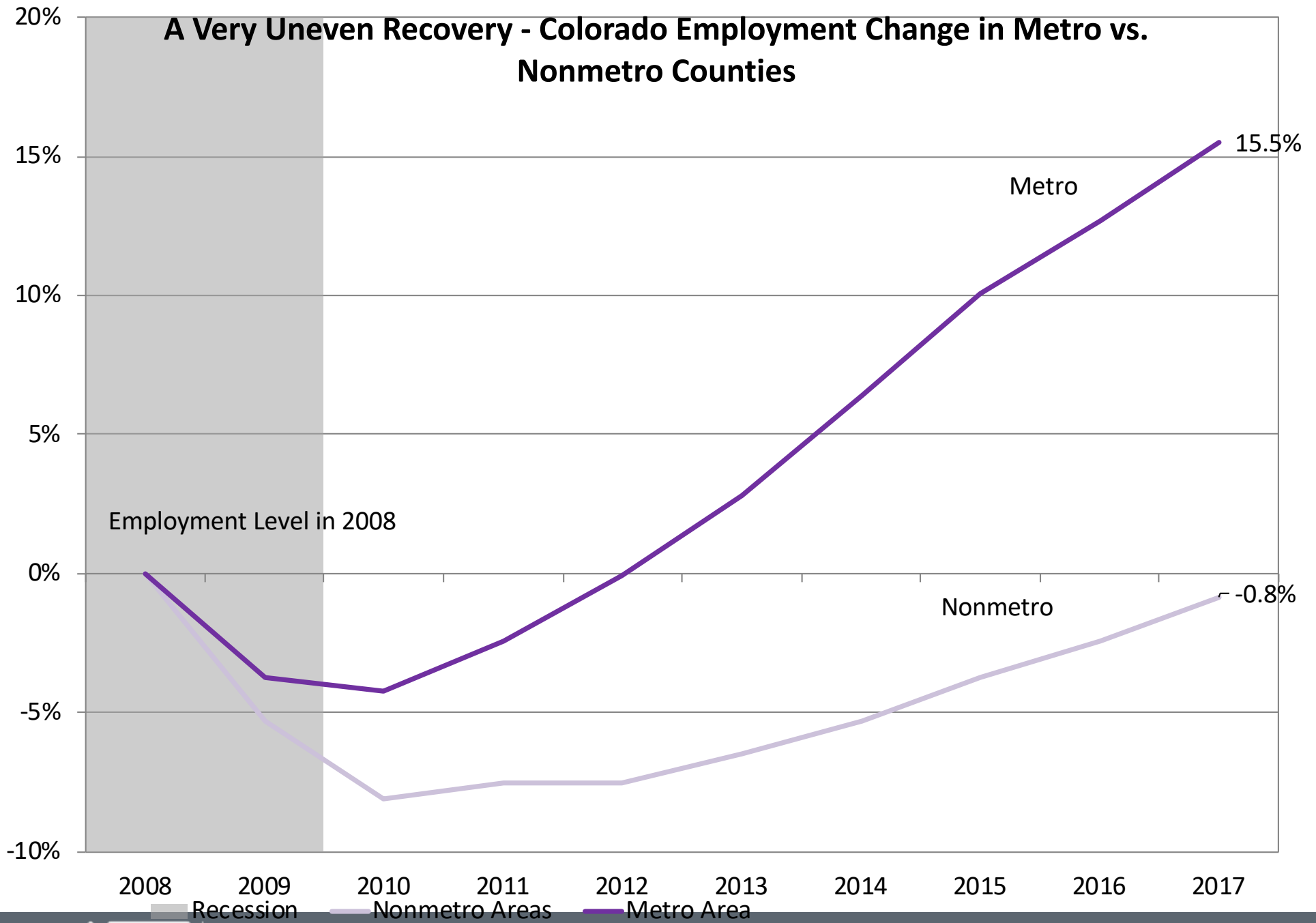


Colorado State Demography Office, 07/24/2018



**COLORADO**  
Department of Local Affairs

# A Very Uneven Recovery - Colorado Employment Change in Metro vs. Nonmetro Counties



# AGE MATTERS

Why?

Preferences - where people shop  
and what they buy.

Housing

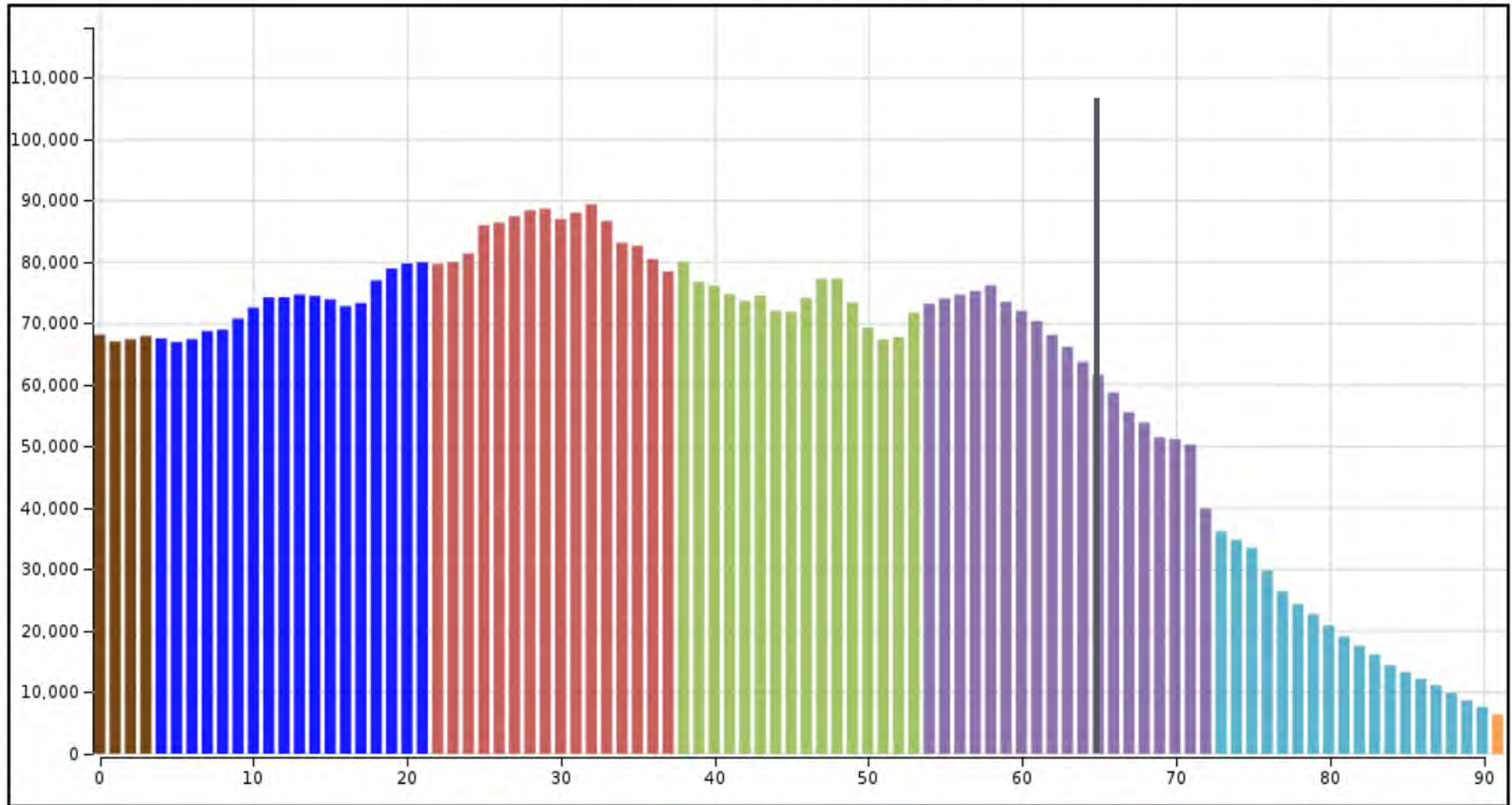
Income

Service Demands

Labor Force

# Colorado

# 2018

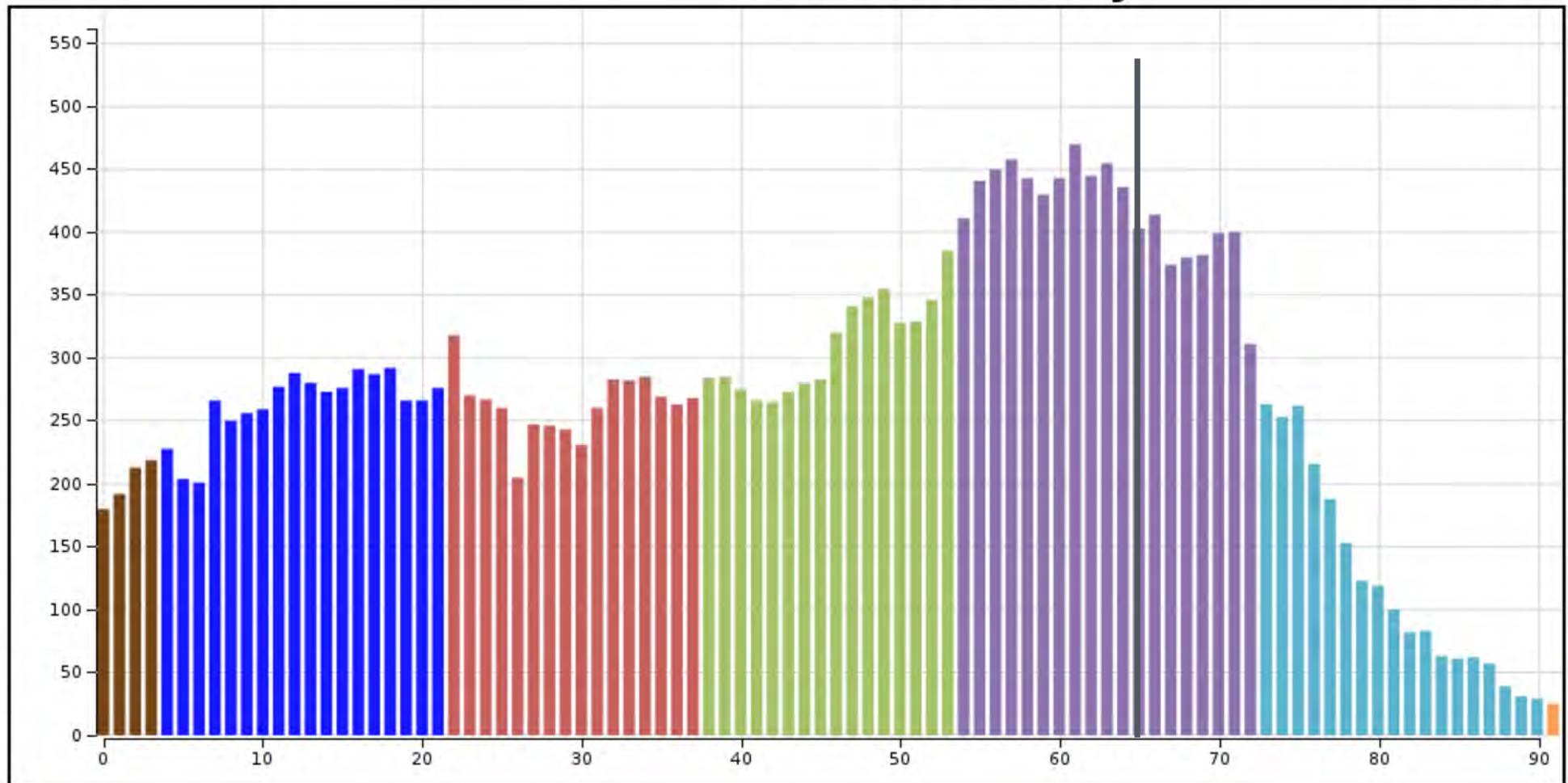


- Post Millennials (1997 - 2014)
- Millenials (1981 - 1996)
- Generation X (1965 - 1980)
- Baby Boomers (1946 - 1964)
- Silent Generation (1928 - 1945)
- Greatest Generation (- 1927)
- Future Generations
- Next Generation



# Teller County

# 2018



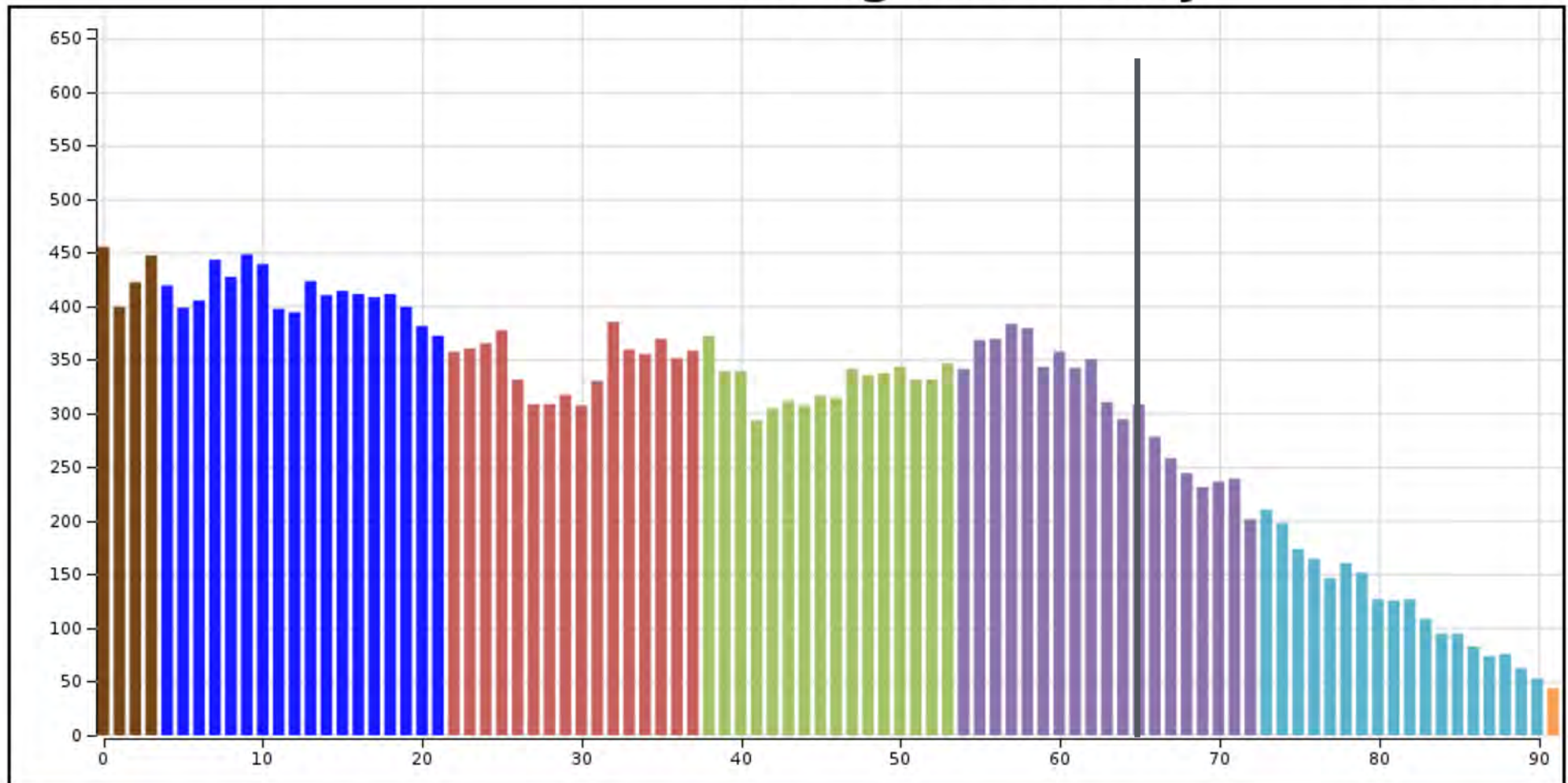
- Post Millennials (1997 - 2014)
- Millennials (1981 - 1996)
- Generation X (1965 - 1980)
- Baby Boomers (1946 - 1964)
- Silent Generation (1928 - 1945)
- Greatest Generation (- 1927)
- Future Generations (2030 -)
- Next Generation (2015 - 2029)





# Morgan County

# 2018



- Post Millennials (1997 - 2014)
- Millennials (1981 - 1996)
- Generation X (1965 - 1980)
- Baby Boomers (1946 - 1964)
- Silent Generation (1928 - 1945)
- Greatest Generation (- 1927)
- Future Generations (2030 -)
- Next Generation (2015 - 2029)

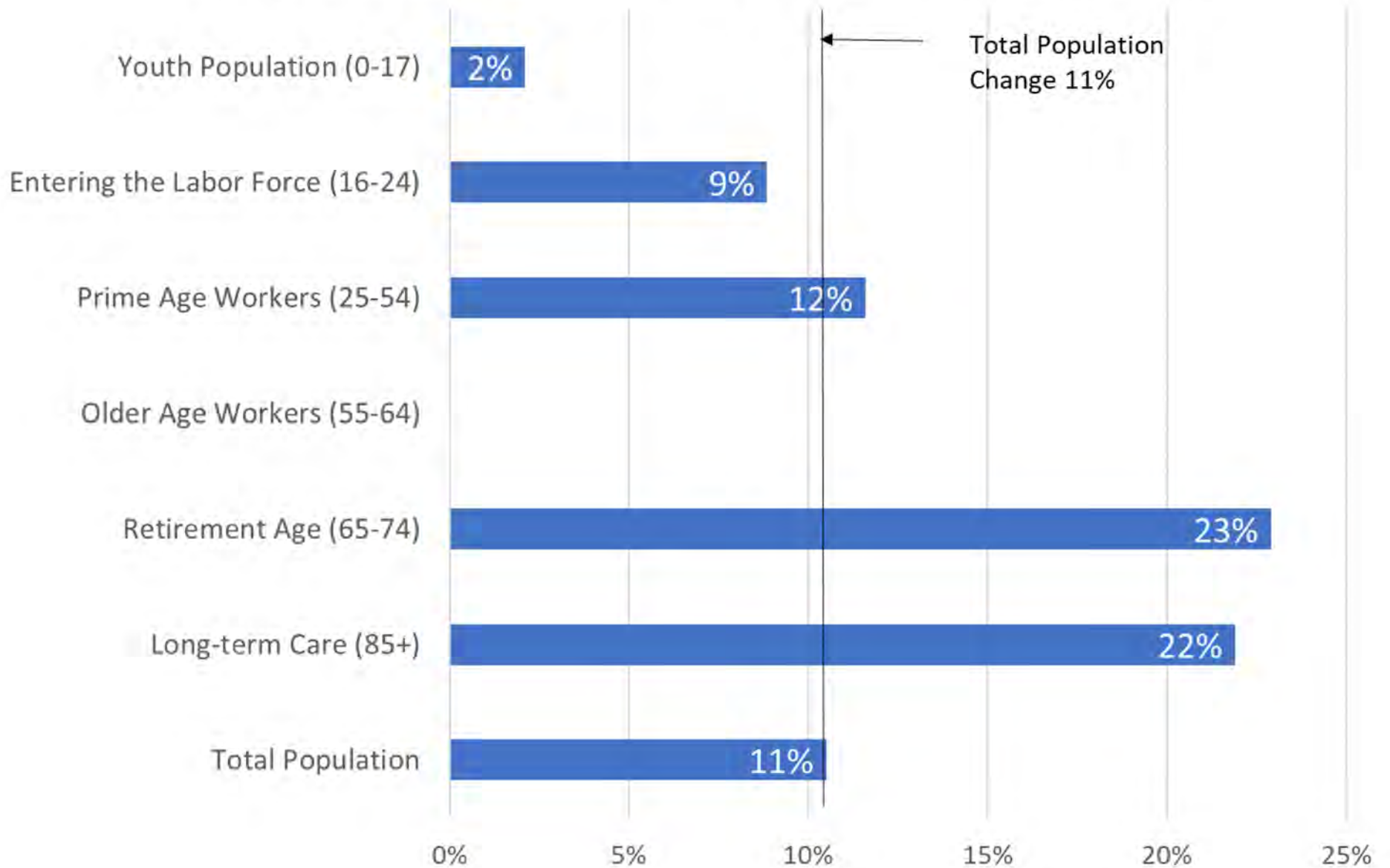


# Colorado's Rapid Aging

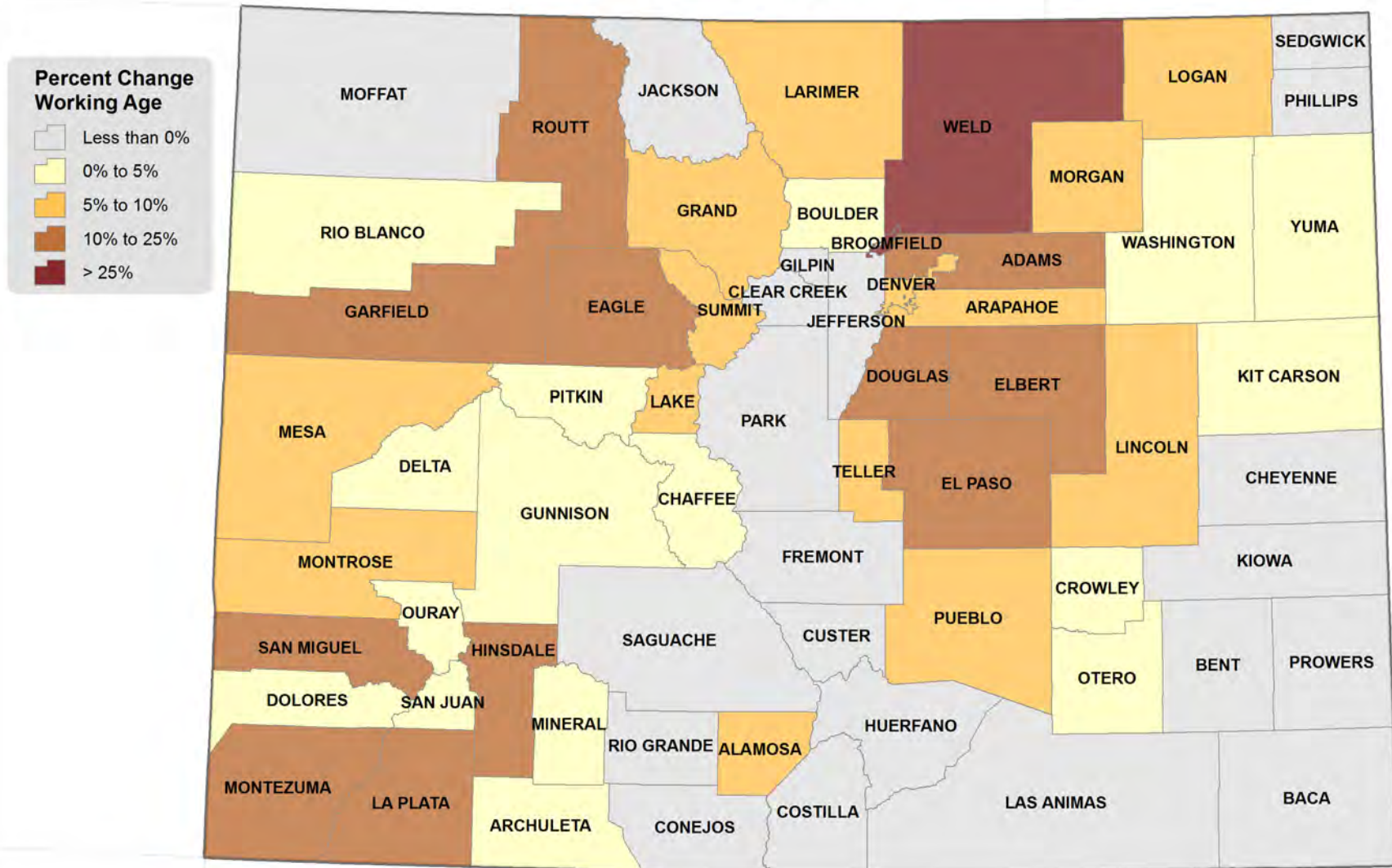
- Every County experienced growth in the population over age 65 from 2010-2017.
- Currently 6<sup>th</sup> youngest (share of population 65+)
- 3<sup>rd</sup> fastest growth in 65+ population in Nation from 2016-17.
- Caused by our age distribution and migration patterns
- By 2030 we will look more like the Nation.
- Median age is forecast to increase from 36.5 to 41.7 by 2050.
- Statewide current residents aging 95% of growth 65+.



### Projected Change in Specific Age Group Populations in Colorado, 2018 to 2025



# Forecast Change in the Working Age Population 2018 - 2025



Colorado State Demography Office, 11/2/2018

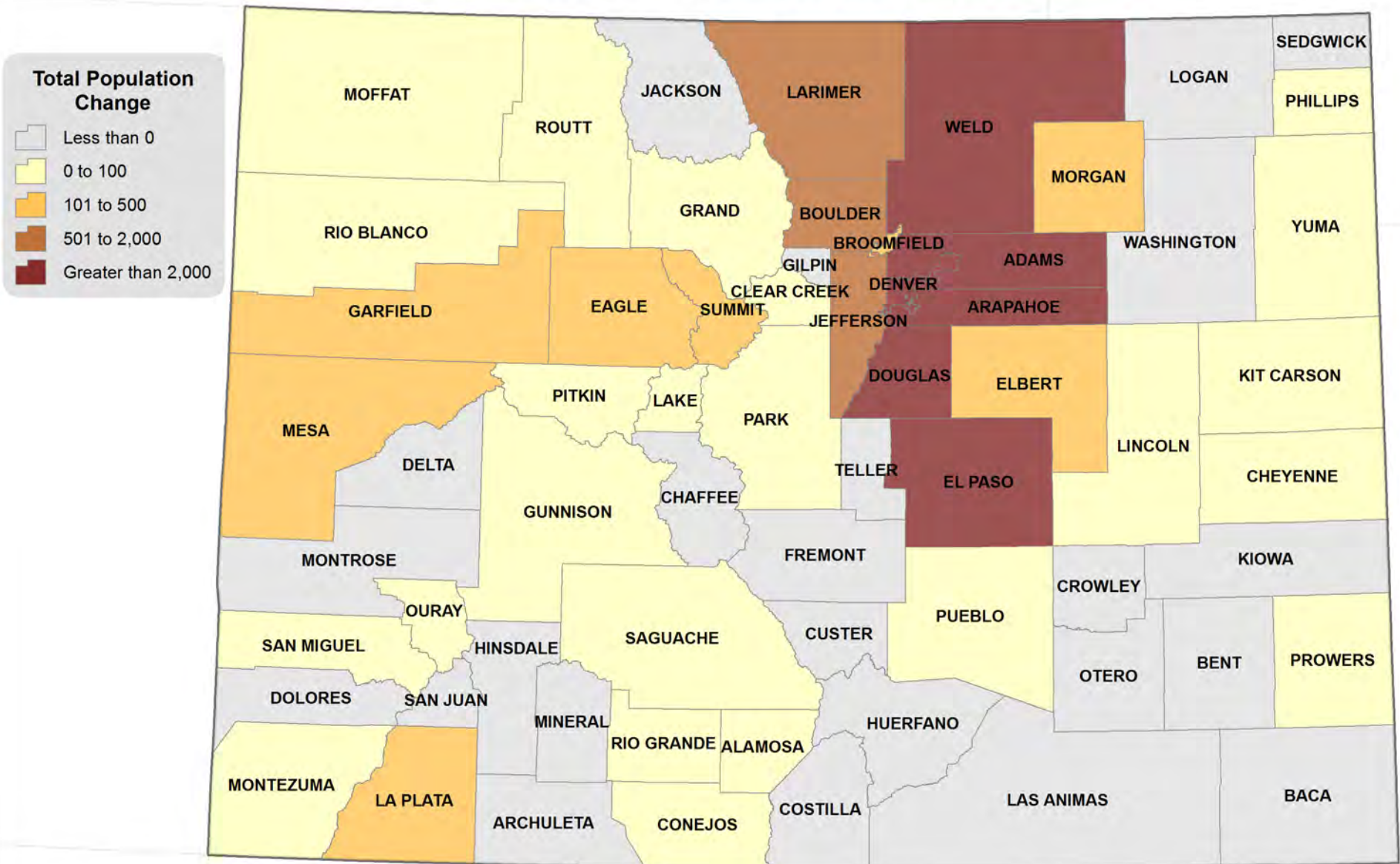


**COLORADO**  
Department of Local Affairs

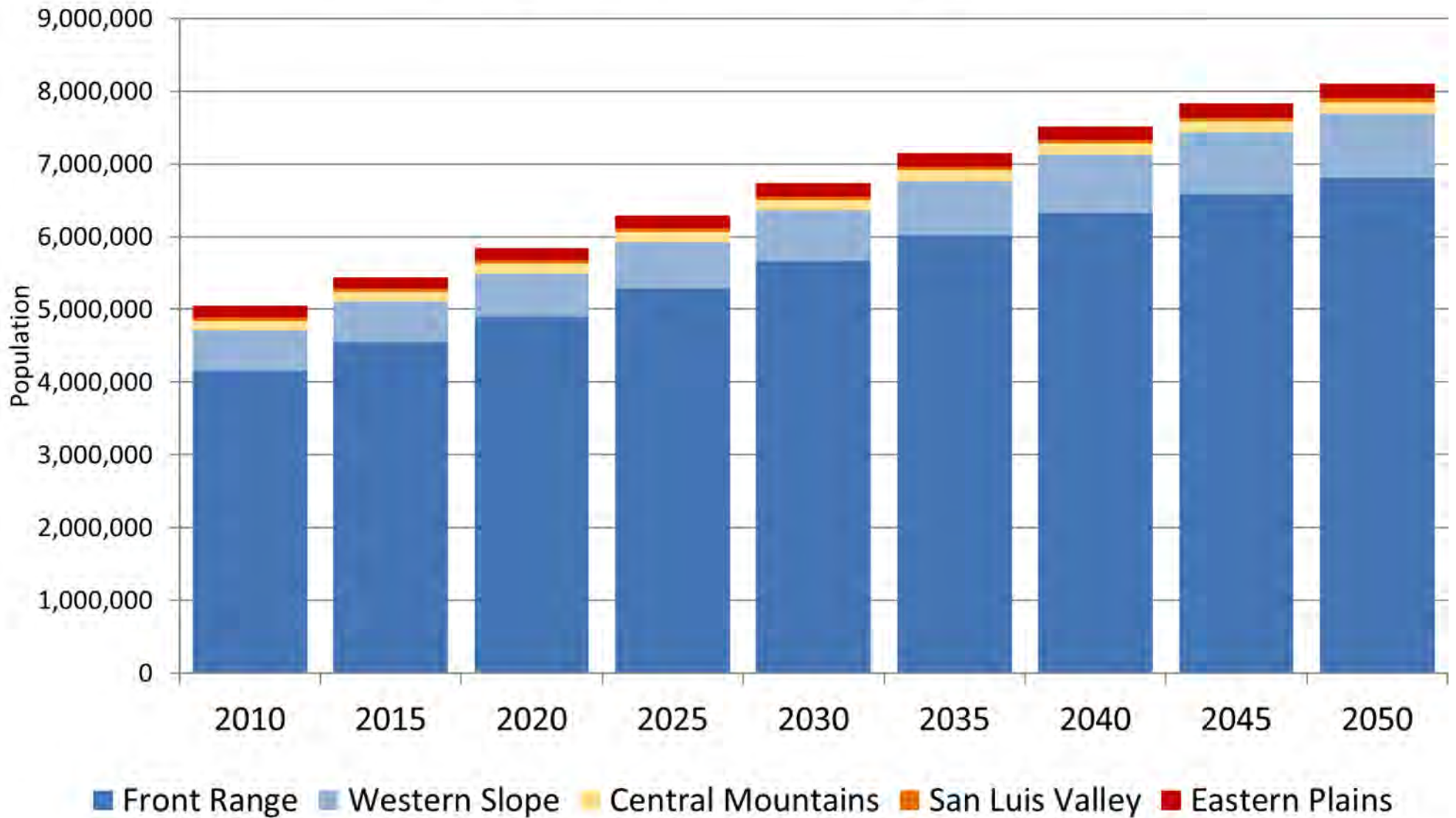
**More Growth but  
Slowing**

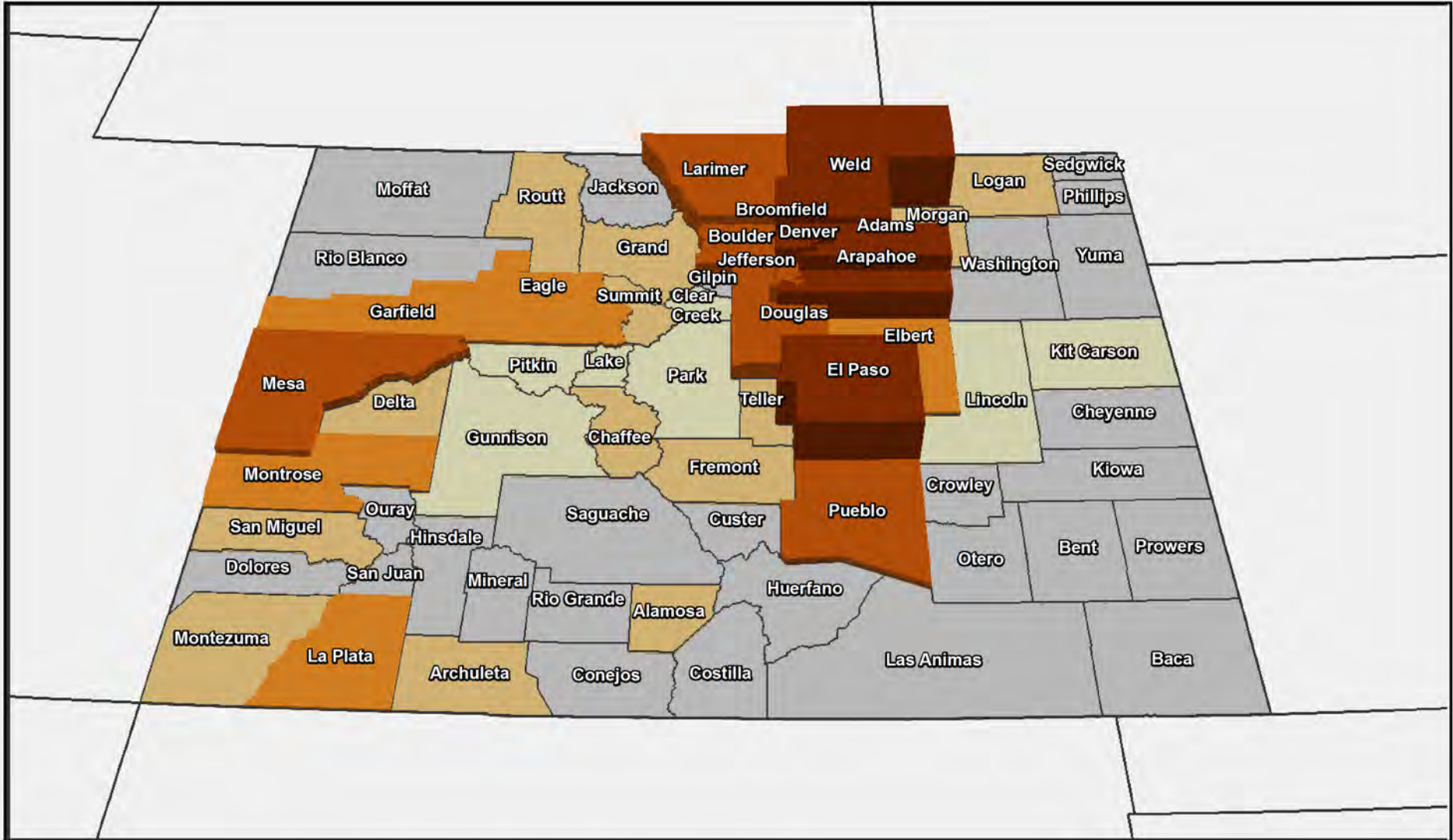
# Average Natural Population Change

## Births minus Deaths, 2018 - 2030

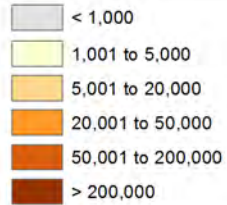


# Colorado Population Forecast by Region 2010-2050





# Projected Population Change 2018 to 2050





# Summary Trends

- Everything connected - People, jobs, education, income, housing, entertainment/recreation.
- Disparity - growth, jobs, education, income - what is causing it and what can be done?
- Migration - how do we continue to attract and retain the best worker for the right job.
- Aging - natural decline, labor force, jobs, income,
- Labor force - strategies to increase labor force participation
- Increase race/ethnic diversity - education, labor force.
- Plan for risks to the forecast - climate, water, labor, migration, relative costs, industry changes, infrastructure, state budget, national policies.



*Thank you*

State Demography Office  
Department of Local Affairs

Cindy DeGroen

[Cindy.degroen@state.co.us](mailto:Cindy.degroen@state.co.us)

303-864-7752

[Demography.dola.colorado.gov](http://Demography.dola.colorado.gov)

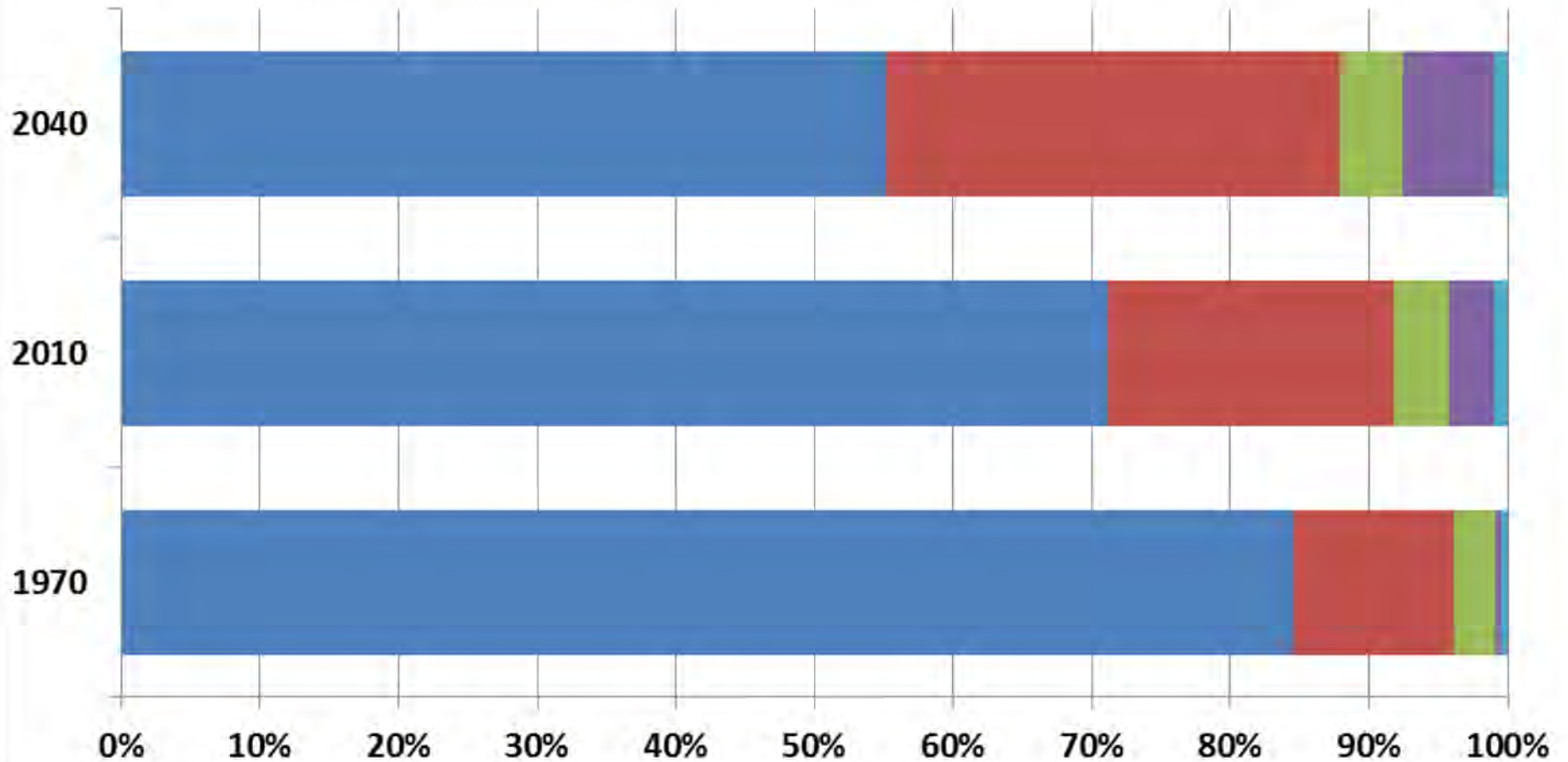


**COLORADO**  
Department of Local Affairs

**Ethnicity/Race increasing**

# Colorado Population by Race/Ethnicity

White not Hispanic   Hispanic   Black   Asian   American Indian



## Share of Net Increase in Working Age Population, 2015-2020

